



Mothers  
Establishing  
Life's  
Direction



# Annual Report 2015

A LOOK AT FISCAL YEAR

## FISCAL YEAR 2015 (July 2014-June 2015)

### MELD Facts and Stats

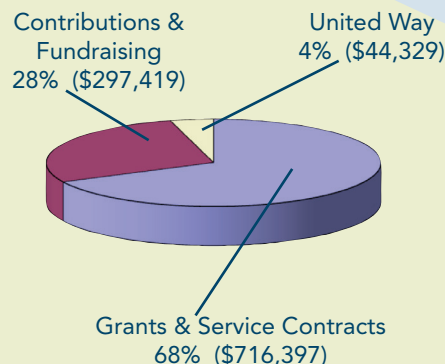
- MELD at Trinity House Homeless Shelter housed, fed and clothed **34** mothers and **30** children for a total of **2,231** bed nights
- **257** requests were made to MELD for shelter or housing. **193** mothers and children were turned away due to lack of space
- **148** young mothers and fathers received parenting education, information and support in the MELD Moms and Dads Groups
- The MELD Transitional Living Program provided housing for **34** mothers and **46** children for a total of **10,478** bed nights
- **80** young women while residing in our Homeless Shelter or our Traditional Living Programs, received or completed tutoring, educational assistance, vocational training, their GED or High School Diploma and/or attended local colleges
- **10** shelter and transitional living program participants were employed at agencies, companies or businesses in our community
- **62** mothers, fathers and their children, who were homeless or at risk of being homeless, were provided case management and/or housing assistance, through the Homeless Prevention/Rapid Re-Housing Program
- Over **500** individuals volunteered with programs and events for MELD

### FUNDING SOURCES - (July 2014-June 2015)

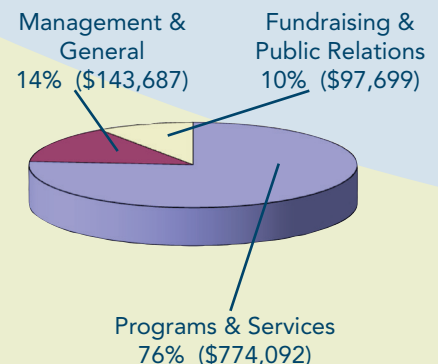
- Donations
- Fundraising Events
- Youth Services Network
- United Way
- Department of Housing and Urban Development
- Department of Human Services
- City of Rockford
- Illinois School Board of Education
- Federal Emergency Management Agency
- Department of Commerce and Economic Opportunity

### 2015 FINANCIAL STATEMENT

Support & Revenue (\$1,055,137)



Functional Expenditures (\$1,047,785)



**Rockford MELD**  
107 N. 3rd St.  
Rockford, IL 61107  
Phone: 815.963.6353  
Fax: 815.963.6351  
Email: [meld@rockfordmeld.org](mailto:meld@rockfordmeld.org)  
[www.rockfordmeld.org](http://www.rockfordmeld.org)  
Facebook: Rockford MELD

For 34 years MELD has been carrying out their mission "guiding young parents to build a strong family and lead a responsible life by providing shelter, education and life skills training." MELD is a non-profit social service agency. The agency started in 1981 and was incorporated in 1985.

MELD was honored to receive the Excelsior Award in 2003. It is one of the most prestigious awards given to a local non-profit each year for their outstanding performance and service to the community.

MELD receives funding from federal, state and local grants, United Way, Youth Services Network, contributions and in-kind donations. MELD held their annual fundraising events including: MELD Sports Celebrity Event, MELD Cards & Note Cards, MELD Classic July 4th Alan Hutchcroft Memorial Run and Fun Walk, MELD Golf Play Day and MELD on the Rock.

### Support of the Community

Rockford MELD depends on the support of the community for the success of our programs. Contributions from businesses and individuals, in-kind donations of needed items, and supplies for MELD families and volunteering are all vital for the success of MELD programs and services.

### **MELD at Trinity House Homeless Shelter**

Our shelter, MELD at Trinity House, located at 620 Kishwaukee St., is licensed by the Department of Children and Family Services to house 8 homeless young mothers and their children. It is staffed twenty-four hours a day. Mothers at the shelter are between the ages of 18 and 21. While at the shelter the needs of each young family are assessed and appropriate linkages to other community agencies, and schools, are made.



### **MELD Transitional Living Program**

Young families must make application to the program and are accepted only upon agreement to develop their goal plan and abide by the rules of the program. Parents live with their children in apartments, and are responsible for paying their own rent, based on their income and maintaining their living residence. Families with no previous experience at living on their own reside in the Phase II level, located on the third floor of our shelter. Those with some independent living experience, are in Phase III level, living in MELD apartments located throughout the community. The Transitional Living Program has a total of 22 apartments for young families between the ages of 18-21.



### **MELD Homeless Prevention and Rapid Re-Housing Program**

MELD provides housing assistance for young families between 18-25 who are at risk of homelessness or have recently become homeless. Families can receive short term subsidy, assessment and case management and are referred to other community agencies as needed. The primary focus of this program is housing stabilization.

### **MELD Moms and Dads Parenting Groups**

MELD provides programs for young mothers and fathers and their children through our MELD Moms and Dads Parenting education and support groups. Families come together to discuss parenting issues and to share ideas with each other. The groups meet weekly at local churches and local high schools. Volunteers provide childcare and healthy snacks.



### **Education and Employment Assistance Program**

Through the program, MELD partners with local employers who provide job opportunities for young parents. This program gives them the opportunity to develop good work ethics, job dependability and job training. Local businesses and agencies can benefit from these MELD programs by having a MELD parent work and receive training at their company. The programs provide job training and work experience opportunities for young parents and exposes them to a positive work environment, while offering them a variety of job experiences. The program provides GED tutoring and assistance in completing their education while securing employment. MELD staff provides case management, guidance and career planning.



### **Community Support**

Partnerships with community individuals, businesses, corporations, churches and other agencies are fundamental to the success of MELD programs and services. Collaborative programming ensures that MELD families receive comprehensive and coordinated services. Local housing developers coordinate with MELD to provide affordable and safe homes for MELD families. Area churches assist MELD by hosting the moms and dads support groups. Many churches, businesses and civic groups choose MELD as the recipient of their annual giving and in-kind donations.