

# annual report.2009

## FISCAL YEAR 2009 (July 2008-June 2009)

### Accomplishments and Program Statistics

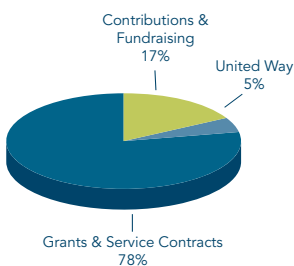
- MELD at Trinity House Homeless Shelter housed, fed and clothed **143** mothers and children for a total of **4,926** bed nights
- A total of **263** mothers and children were turned away from the MELD at Trinity House Homeless Shelter due to lack of space
- **121** mothers and fathers received information, education and support in the MELD Moms and Dads Groups
- The MELD Transitional Living Program provided housing and training in independent living skills to **110** families
- **83** young women and men received and/or completed work readiness, GED/educational assistance, tutoring, vocational training and/or were employed at local businesses and agencies
- **209** individuals participated in Healthy Relationship Workshops
- **83** youth in local middle schools received prevention education information in the Responsibility Groups
- Over **700** individuals volunteered for MELD

## FUNDING SOURCES (July 2008-June 2009)

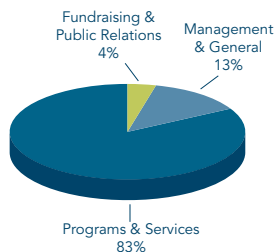
Youth Services Network  
 Winnebago County Health Department  
 Department of Housing and Urban Development  
 Department of Human Services  
 Department of Health and Human Services  
 City of Rockford  
 Illinois School Board of Education  
 United Way  
 Federal Emergency Management Agency  
 Department of Commerce and Economic Opportunity  
 Donations

## 2009 FINANCIAL STATEMENT

Support & Revenue



Functional Expenditures



Through our programs and services, in fiscal year 2009, MELD offers support and resources, life and job skills training, emergency shelter and housing, parenting information, prevention education and healthy relationship workshops. MELD serves families and youth in the community. MELD is a non-profit social service agency. The agency started in 1981 and was incorporated in 1985. In 2003 MELD received the Excelsior Award, the most prestigious award given to a local non-profit each year for their outstanding performance and service to the community.

MELD receives funding from federal, state and local grants as well as United Way, Youth Services Network, contributions and in-kind donations. The agency sponsors several fundraising activities throughout the year: MELD Sports Celebrity Event, MELD Mother's Day Cards, Prints and Note Cards, the MELD Classic Alan Hutchcroft Memorial July 4th Run and Fun Walk and our Golf Play Day.

## Support of the Community

Rockford MELD depends on the support of the community for the success of our programs with contributions from businesses and individuals, in-kind donations of needed items, supplies for MELD families and volunteerism to the agency.

**Rockford MELD**  
 3703 N. Main St.  
 Rockford, IL 61103  
 Phone: 815.633.6353  
 Fax: 815.633.8709  
 Email: [meld@rockfordmeld.org](mailto:meld@rockfordmeld.org)  
[www.rockfordmeld.org](http://www.rockfordmeld.org)



# OUR MISSION TO ... "STRENGTHEN FAMILIES"

## MELD PROGRAMS IN 2009

### **MELD at Trinity House Homeless Shelter**

Our shelter, MELD at Trinity House, located at 620 Kishwaukee St., is licensed by the Department of Children and Family Services to house homeless mothers and children. It is staffed twenty-four hours a day. By licensure, residents must be under 21 years of age. While at the shelter the needs of each young family are assessed and appropriate linkages to other community agencies, schools, etc. are made. Community staffings are held with all agencies involved with the family and a service plan for the family is agreed upon and implemented.

### **MELD Moms and Dads Groups**

MELD provides programs for young mothers and fathers and their children through our MELD Moms and Dads education and support groups. Families come together to discuss parenting issues and to share ideas with each other. The groups meet weekly at local churches and in local high schools. Volunteers provide childcare and a light dinner meal to ensure that these families are able to take advantage of our services. Facilitators of the groups were young parents themselves and now are volunteering their time as they give back to MELD.

### **MELD Transitional Living Program**

Young families interested in living in the MELD Transitional Living Program must make application to the program and are accepted only upon agreement to develop their goal plan and abide by the rules of the program. Parents live with their children in apartments, and are responsible for paying their own rent, based on their income and maintaining their living residence. Families with no previous experience at living on their own reside in the Phase II level, located on the third floor of our shelter. Those with some independent living experience, enter the program at the Phase III level, living in MELD apartments located throughout the community. The Transitional Living Program has a total of 22 apartments for young families between the ages of 18-21.

The MELD Transitional Living case coordinators assist the young parents in assessing their needs and in developing their goals; specifically in the areas of parenting, money management and education/vocational pursuits. Once goals are set, staffings with all appropriate community agencies are held where the role and responsibility of each individual and agency is agreed upon. As these young families strive to be independent they are also given the support they need as they deal with the tribulations of the real world and the barriers that they encounter.

### **Education and Employment Assistance Program**

Through the Education and Employment Assistance Program, MELD partners with local employers by providing job opportunities for young parents. This program gives young parents the chance to develop good work ethics, job dependability and job training. Local businesses, corporations and agencies can benefit from these MELD programs by having a MELD parent work and/or receive training at their company. The programs provide job training and work experience opportunities for young parents and exposes them to a positive work environment, while offering them a variety of job experiences. The program provides GED tutoring and assistance in completing their education while securing employment. MELD staff provides case management, guidance and counseling as well as career planning.

### **Prevention Education Program**

Responsibility Groups for 6th thru 9th graders meet weekly at local schools. MELD staff provides information and support on self-esteem, decision-making, conflict resolution and sexuality. MELD assists these youth in developing the skills that can help prevent at-risk behaviors and teen pregnancy.

### **Marriage First Program/Healthy Relationships**

The Marriage First Program focuses on healthy relationship education and information. Workshops and seminars are held throughout the year in the community and are available to unmarried and married couples. The program is designed to strengthen families and promote healthy relationships. The program provides prevention education and information for youth.

### **Community Support**

Partnerships with community individuals, businesses, corporations, churches and social service agencies are fundamental to the success of MELD programs and services. Collaborative programming and working relationships with many local agencies ensures that MELD families receive comprehensive and coordinated services. Local housing developers coordinate with MELD to provide affordable and safe homes for MELD families. Area churches assist MELD by hosting the moms and dads support groups and a number of churches, businesses and civic groups choose MELD as the recipient of their annual giving and in-kind donations. Over 700 individuals in the community volunteer their time and talents to MELD each year. It is with the continued support of the community that enables MELD in providing these programs and services to many families and youth in the area.